

# The Satellite-Account for the Sea and SeaMind – A good practice of the Portuguese Public Administration

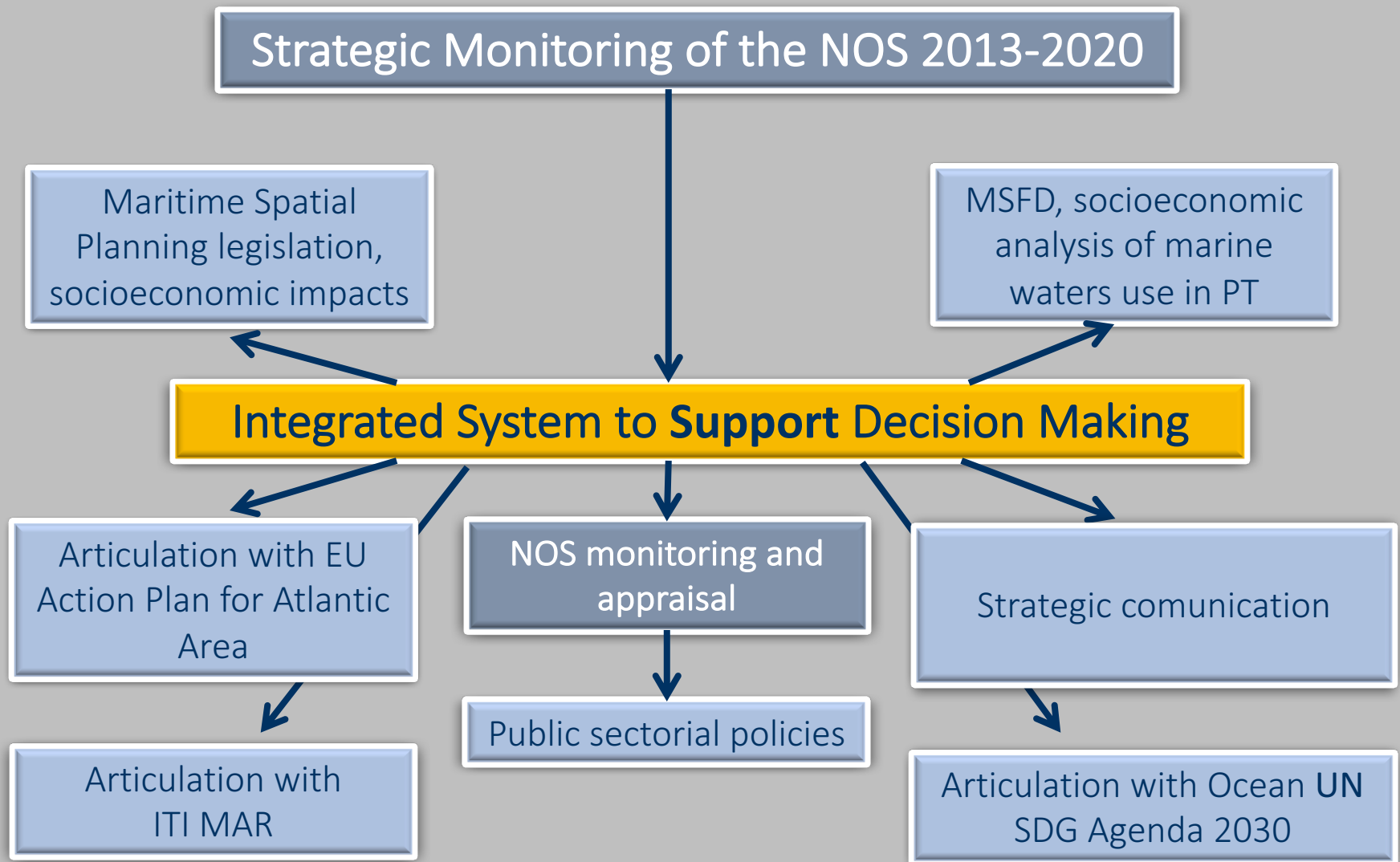
iBlue Thematic Seminar  
“GOOD PRACTICES IN THE YACHTING SECTOR”  
Lisbon, 18<sup>th</sup> September 2018



Conceição Santos  
Head of Strategy Department  
[conceicao.santos@dgpm.mm.gov.pt](mailto:conceicao.santos@dgpm.mm.gov.pt)

# Blue Economy in Portugal

- 1. Decision-making support**
- 2. Instrument to measure**
- 3. Performance**



## Monitoring level

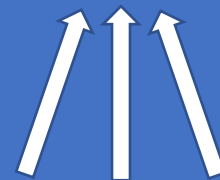
### Indicators

Impact

Result

Output

STRATEGIC  
(Objectives)



OPERATIONAL  
(Projects)

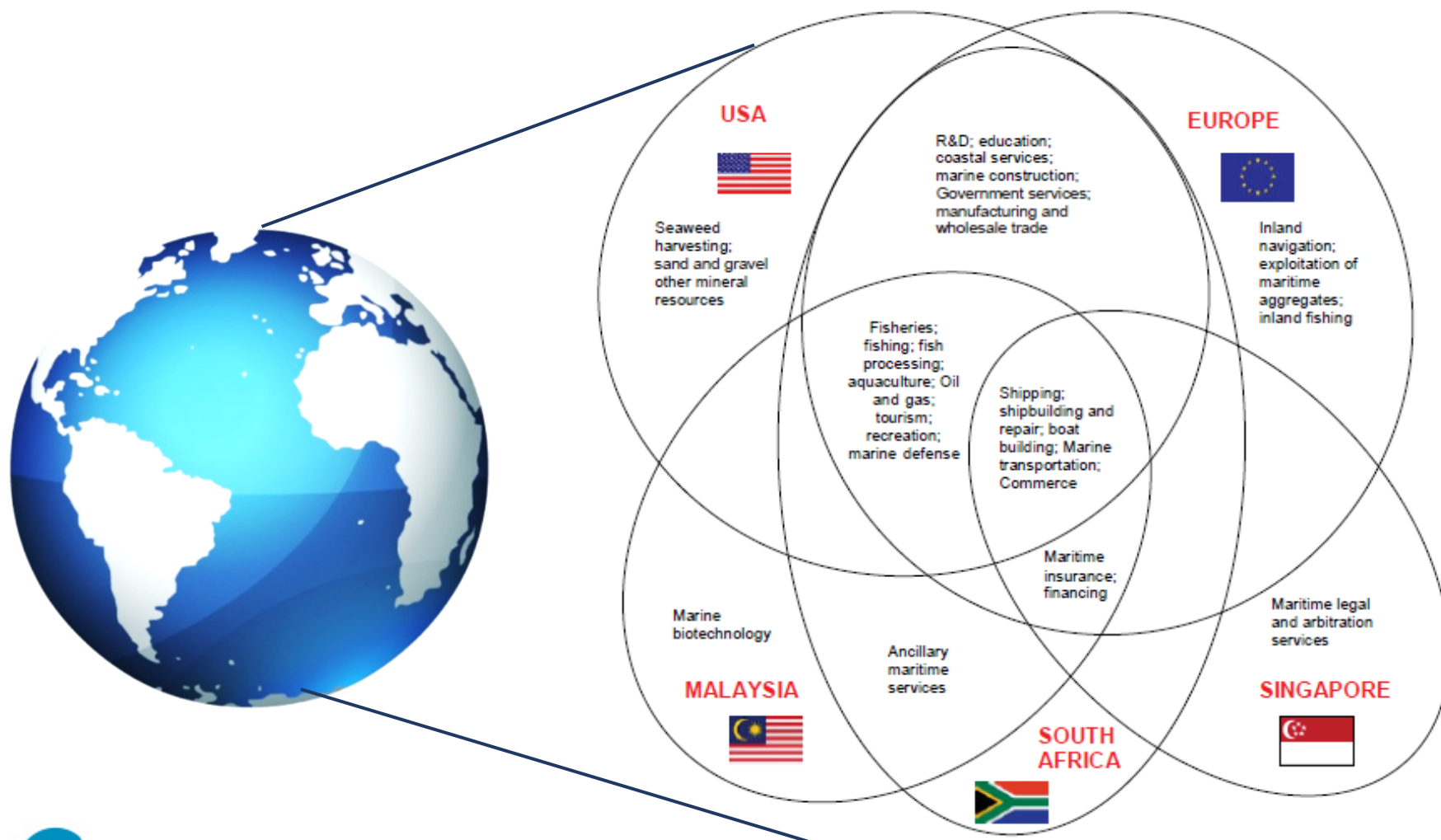
### Instruments

**SEA Mind**  
ECONOMIC, SOCIAL AND ENVIRONMENTAL INDICATORS

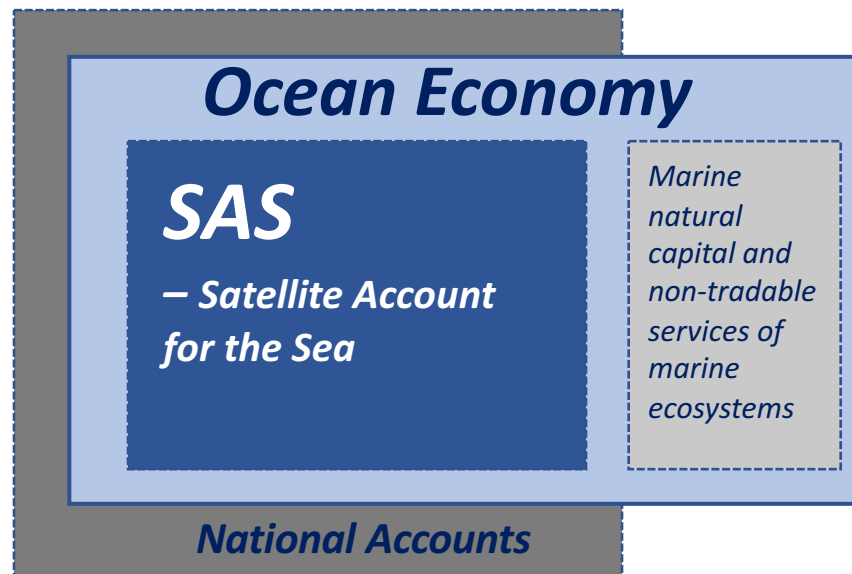
**SEA**  
Satellite Account  
for the

**ITIMar**

## Concept of Ocean Economy: Different approaches worldwide



## Concept



*“Economic activities that take place at sea and others that are not taking place at sea but depend on it, including marine natural capital and non tradable services of marine ecosystems”*



European system  
of accounts

ESA 2010

eurostat  
EUROPEAN COMMISSION

## Satellite Account for the Sea

### National Accounts:

Structured, simplified and  
coherent representation of  
economic activity, allowing  
international comparisons

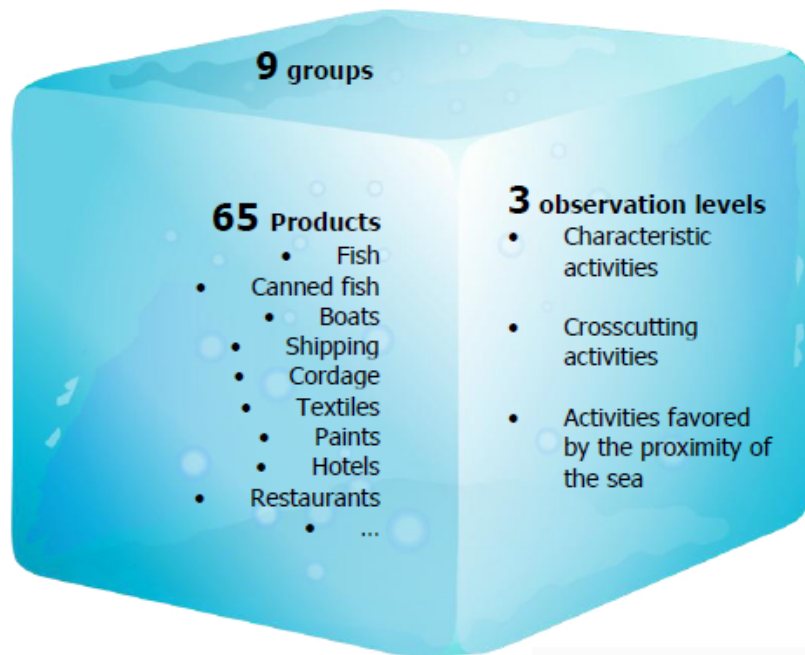
+ detail?  
Ocean Economy?



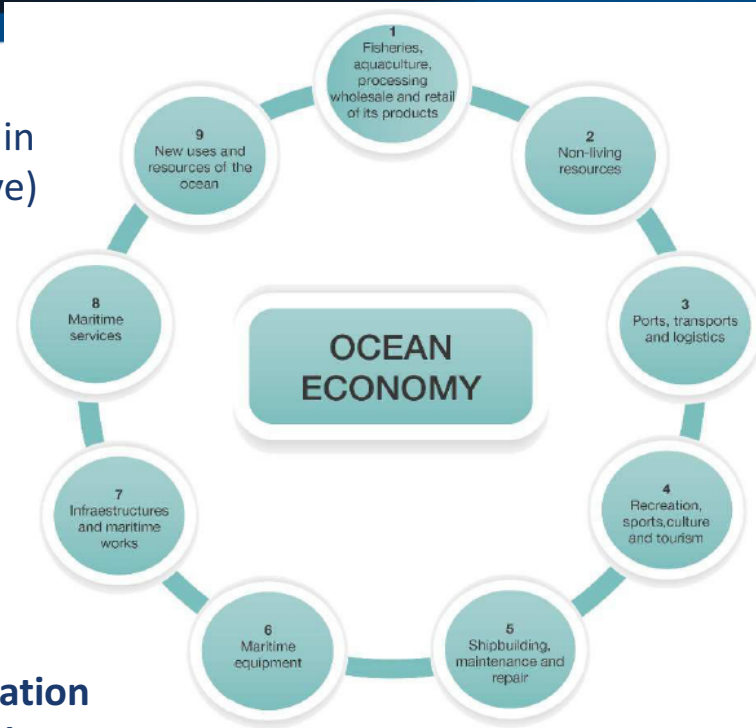


# Sea / Ocean conceptual definition

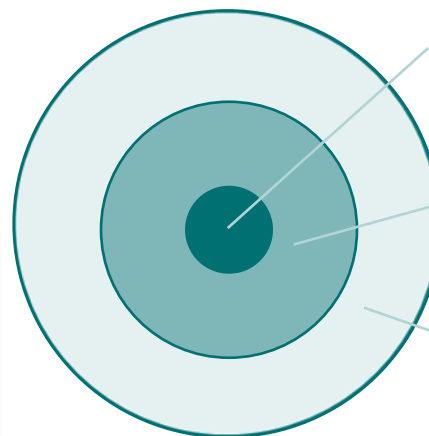
## Information scheme of SAS



## Groups (value chain perspective)



## Observation levels



**Characteristic activities** – fishing, shipping, etc.

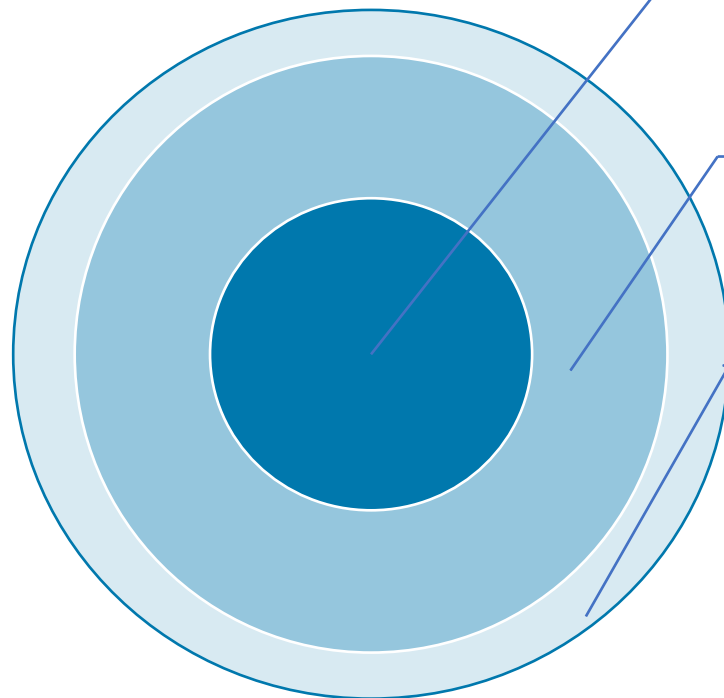
**Crosscutting activities** – equipment and maritime services

**Activities favoured by the proximity of the sea** – coastal tourism



## SAS – Some results (comparison with National economy)

**Ocean economy in Portugal (average 2010-2013):**  
**3.1% of GVA** (4.680 M€)  
**3.6% of Employment** (160.766 FTE)



**Characteristic activities - 1.7% of GVA** (2.604 M€) and **2.0% of employment** (89.722 FTE)

**Crosscutting activities – 0.6% of GVA** (900 M€) and **0.7% of the employment** (27.643 FTE)

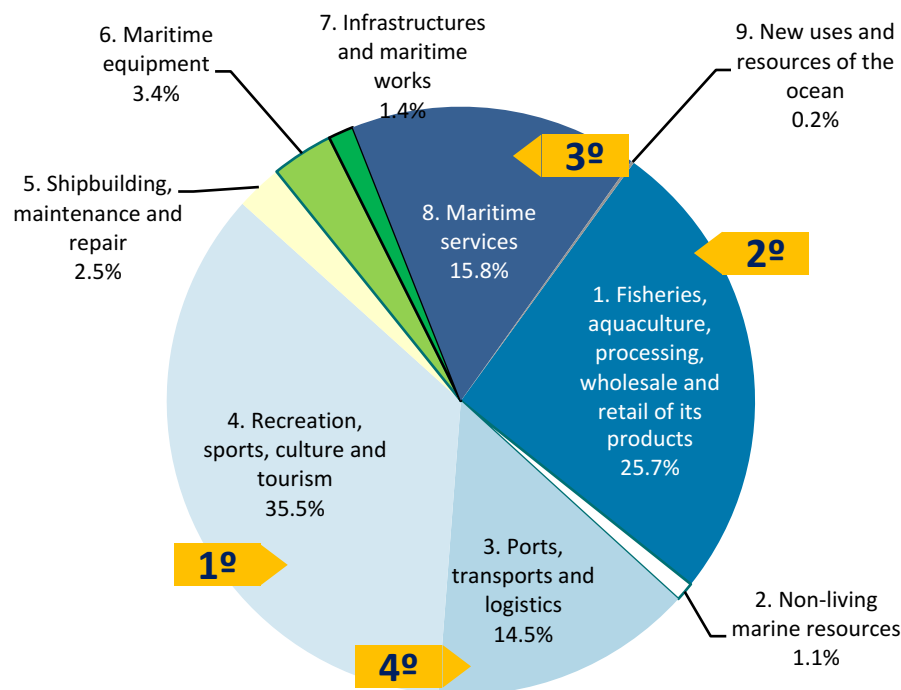
**Activities favoured by the proximity of the sea – 0.8% of GVA** (1.175 M€) and **0.9% of the employment** (43.403 FTE)

Note: FTE – Full-time Employment

Ref: Statistics Portugal, Satellite Account for the Sea



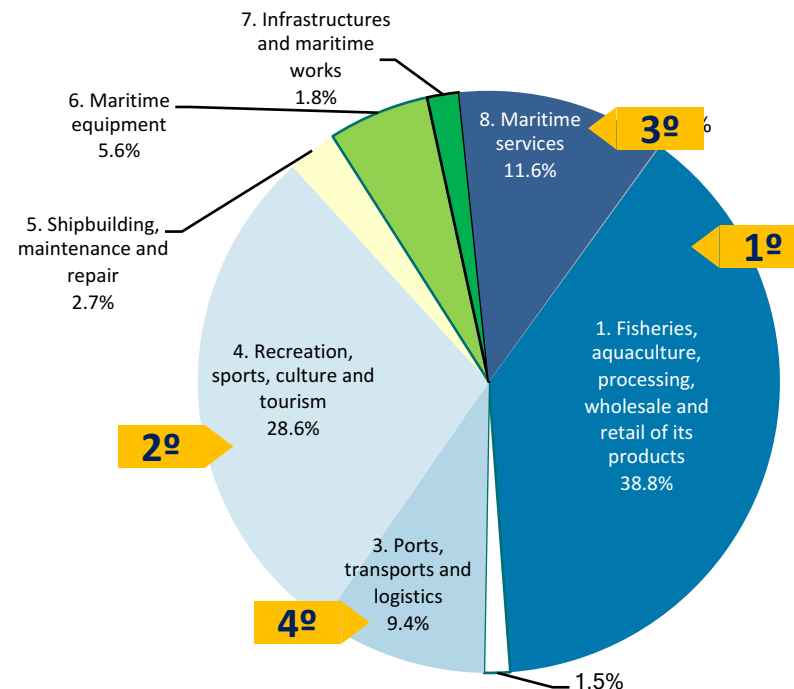
## SAS structure of GVA (by group) average 2010-2013



Ref: Statistics Portugal, Satellite Account for the Sea

Ref: Statistics Portugal, Satellite Account for the Sea

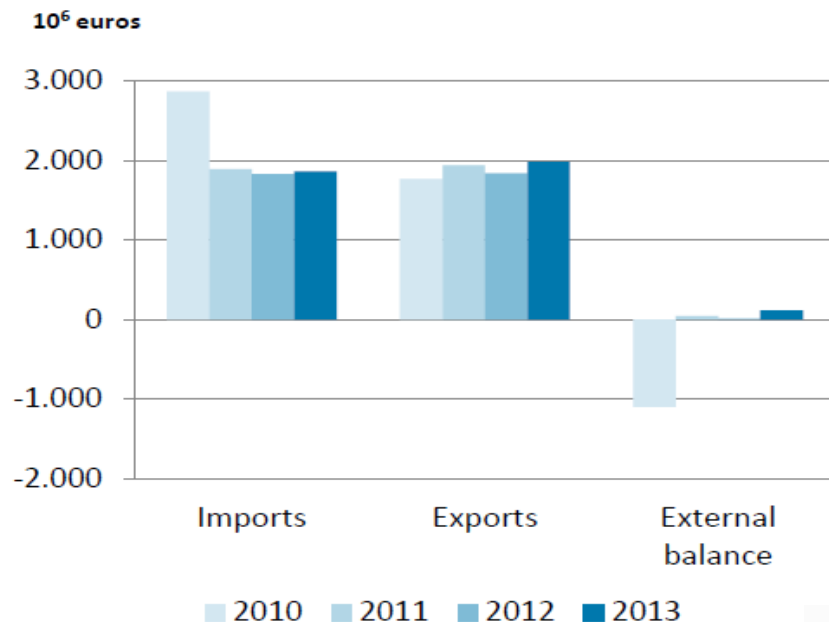
## SAS structure of Employment (by group) average 2010-2013



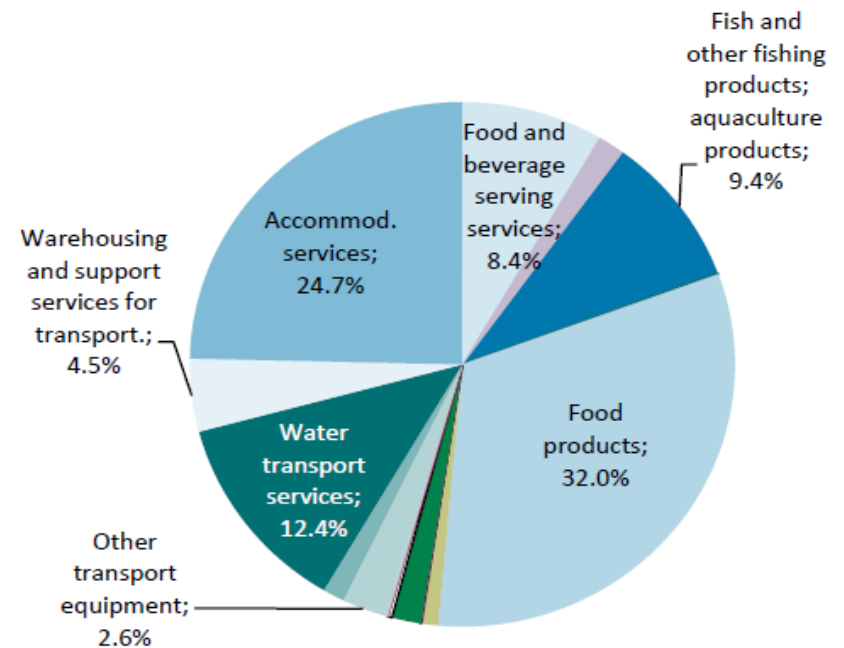
Ref: Statistics Portugal, Satellite Account for the Sea



### SAS Evolution of Imports, Exports and External balance of “sea” products



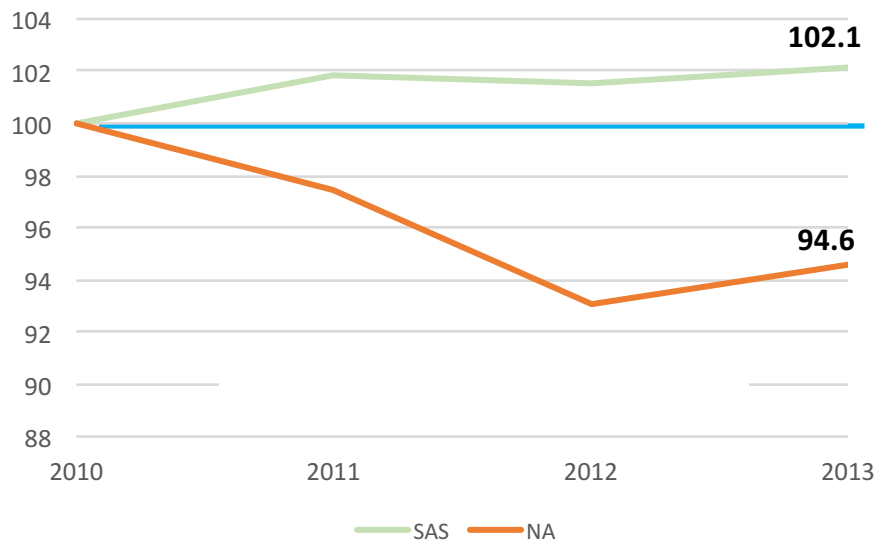
### SAS Structure of “sea” Exports in 2010-2013



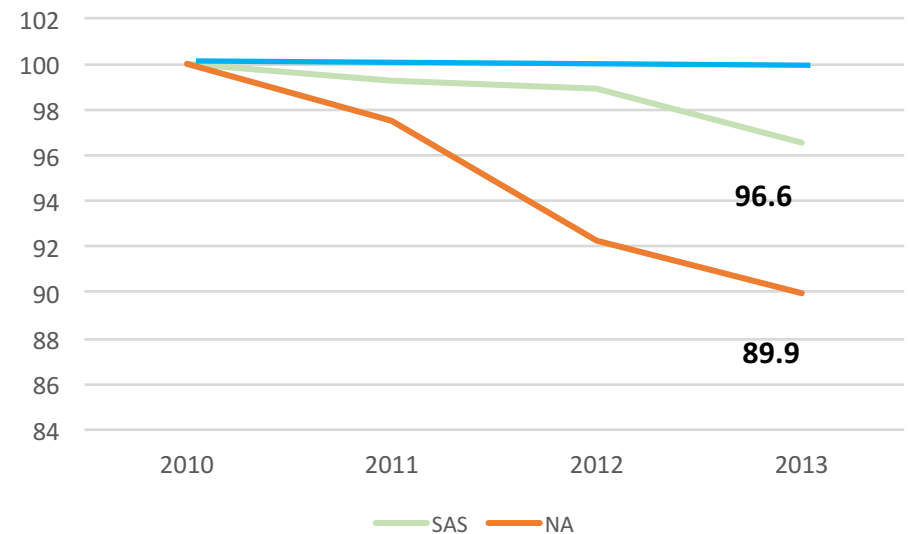
Ref: Statistics Portugal, Satellite Account for the Sea



### GVA from SAS and from National economy, 2010-2013 (2010=100)



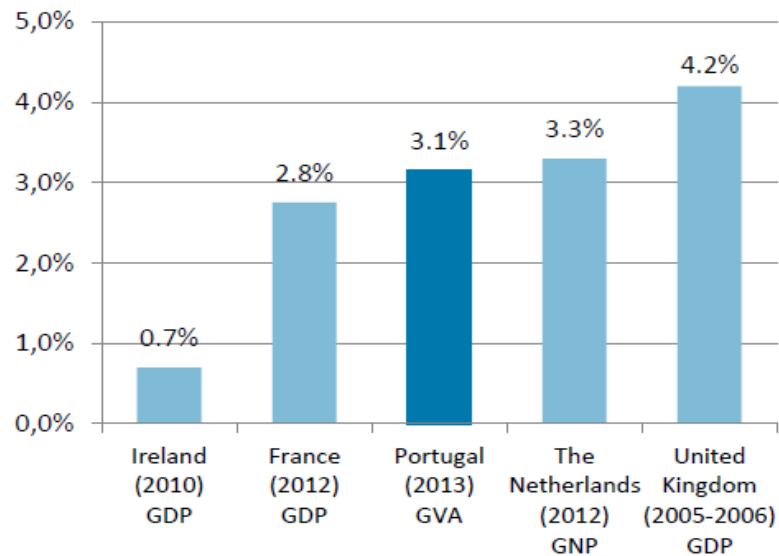
### Employment from SAS and from National economy, 2010-2013 (2010=100)



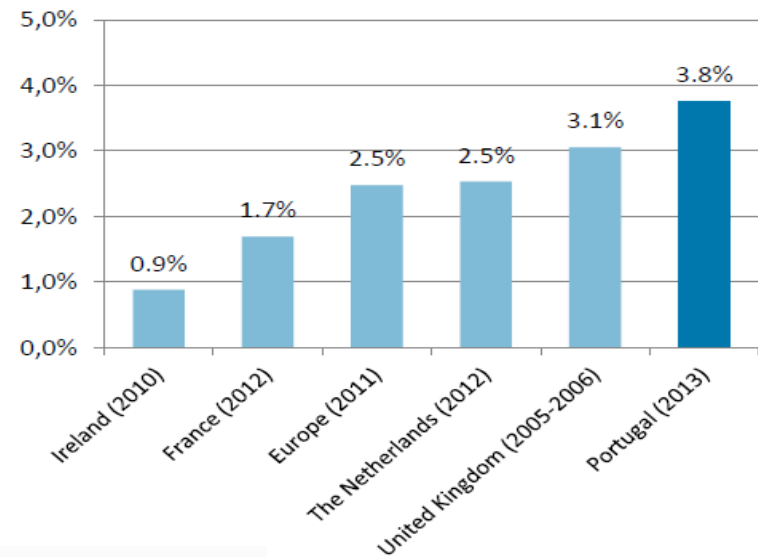
Ref: Statistics Portugal, Satellite Account for the Sea and National Accounts



### Weight of sea GVA/GDP in the national economy of some European countries



### Weight of sea Employment (FTE) in the national economy of some European countries



Ref: Statistics Portugal, Satellite Account for the Sea and National Accounts and OECD, 2016



## Radar – Strategic Objectives



# SEAMInd

ECONOMIC, SOCIAL AND ENVIRONMENTAL INDICATORS

## Dash Board – value chain



# SEAMInd

INDICADORES E MONITORIZAÇÃO ECONÓMICA, SOCIAL E AMBIENTAL

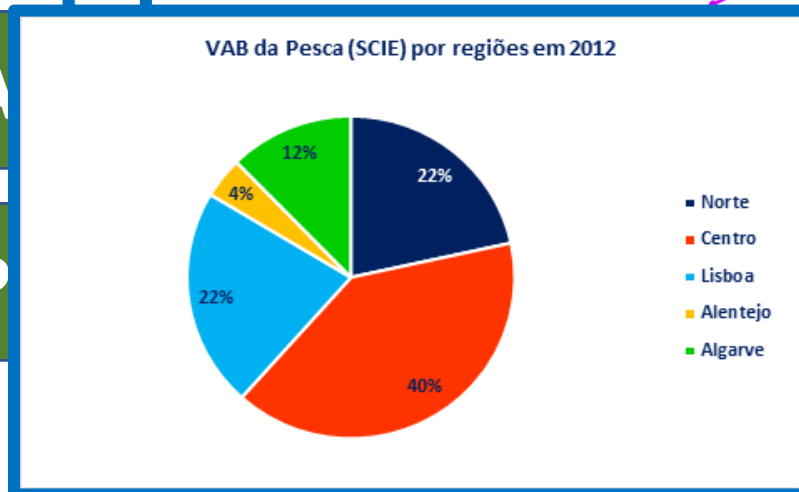
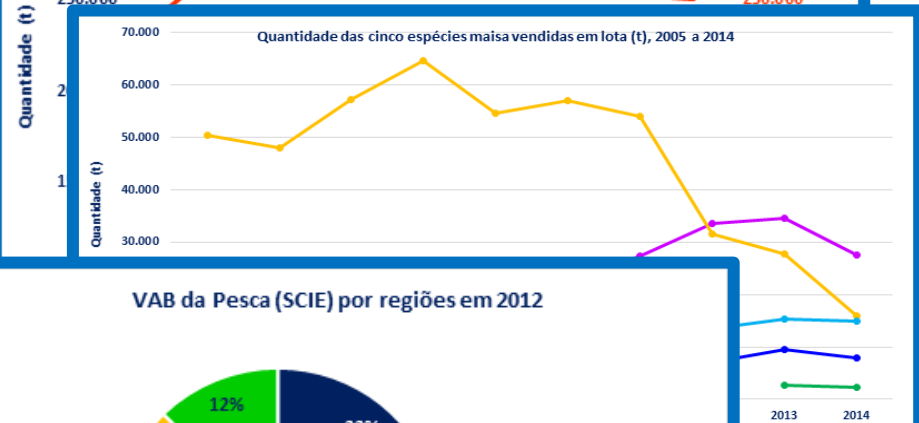
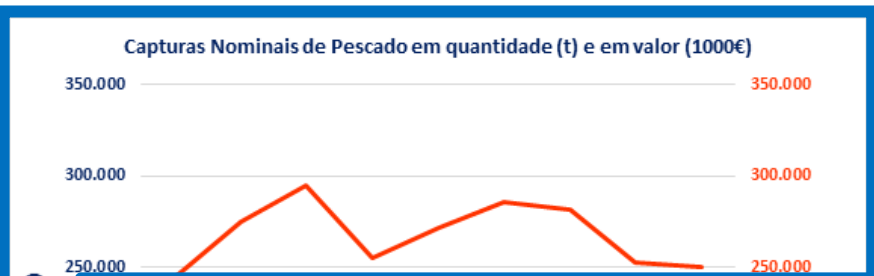
Fisheries, Aquaculture & Processing Ind.



✓ Fis

✓ A

✓ P



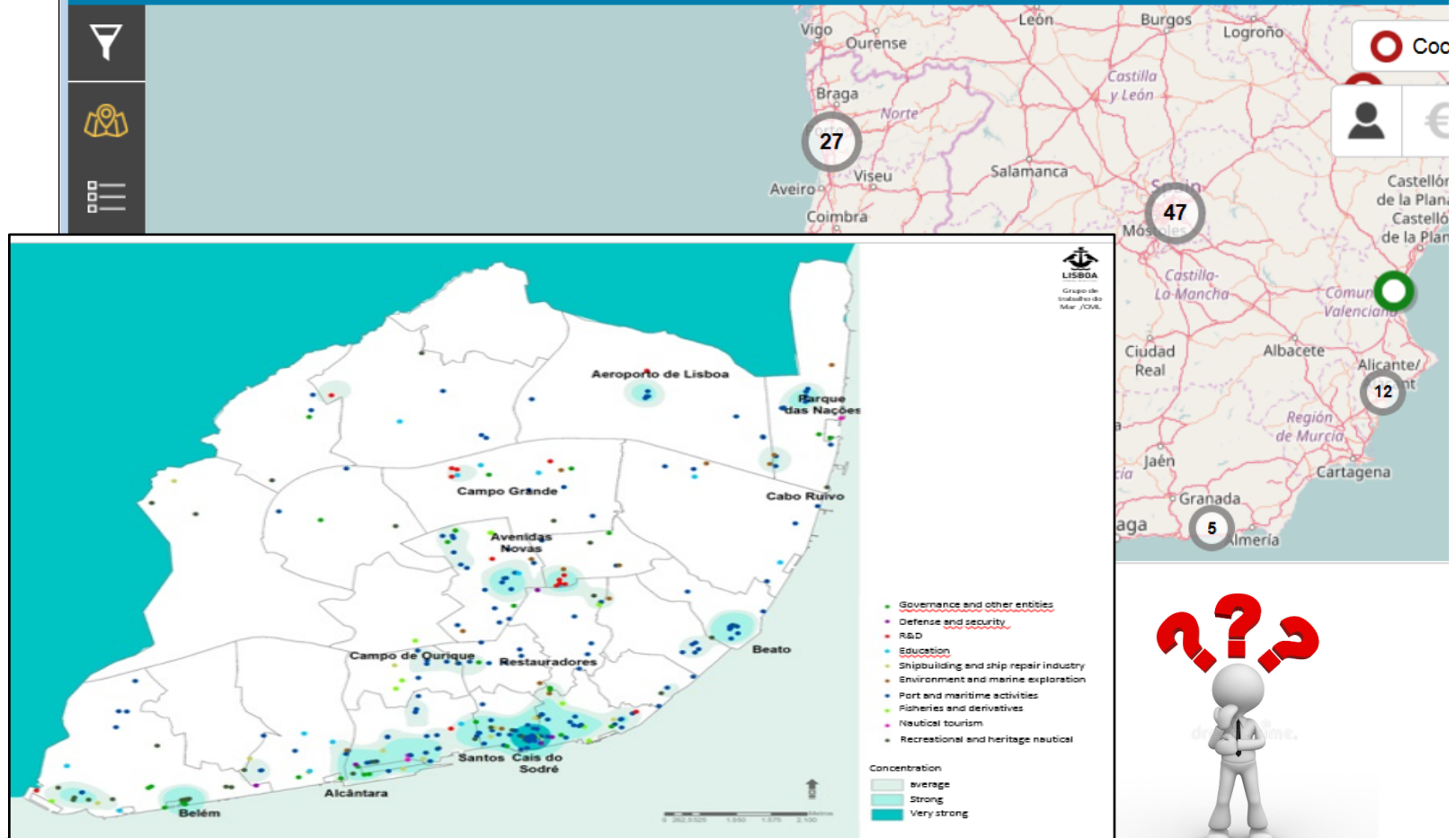
Ref. DGPM, Dados Preliminares do SEAMInd



# SEAMInd

INDICADORES E MONITORIZAÇÃO ECONÓMICA, SOCIAL E AMBIENTAL

## Atlantic Maritime datahub





Fishing average price (1<sup>st</sup> sale)

↑ 23% (2015-2017)

Fishing export volume

↑ 7% (2015-2016)

Fish processing industry  
export volume

↑ 5% (2015-2016)



Cargo movement

↑ 7,4% (2015-2017)

Cruises - stopover

↑ 9% (2015-2017)

Cruises - passengers

↑ 4% (2015-2017)

Registered as PT flag

↑ 94% (2011-2017)



Total revenues tourist establishments  
coastal areas

↑ 18,1% (2015-2016)

ESIF in PT I&D&I ocean projects  
17,5% of total ESIF supporting  
ocean related projects (till Dez2016)



# SEAMInd

ECONOMIC, SOCIAL AND ENVIRONMENTAL INDICATORS



✉ Conceicao.santos@dgpm.mm.gov.pt  
📍 Av. Dr. Alfredo Magalhães Ramalho, 6  
1495-006 LISBOA PORTUGAL  
📞 + 351 218 291 000

# THANK YOU

[www.dgpm.mm.gov.pt](http://www.dgpm.mm.gov.pt)